



Ras-GRF1 (phospho Ser916) Polyclonal Antibody

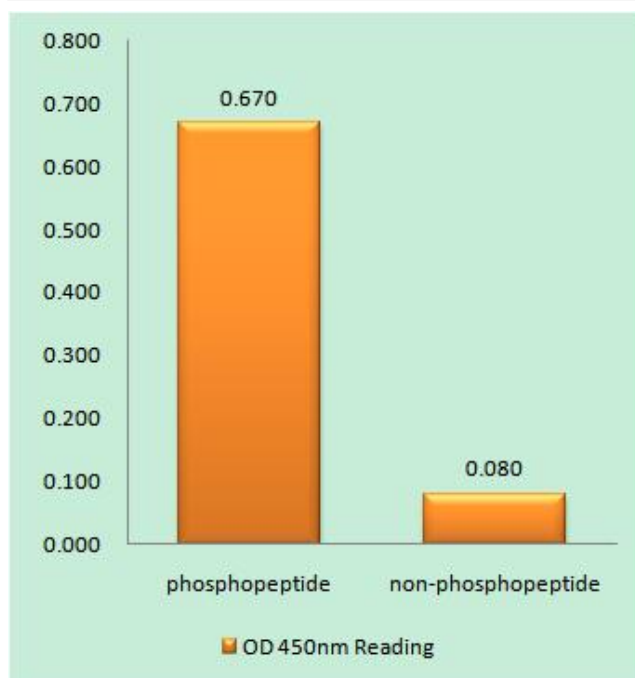
Catalog No	YP-Ab-16120
Isotype	IgG
Reactivity	Mouse;Rat
Applications	WB;IHC;IF;ELISA
Gene Name	RASGRF1
Protein Name	Ras-specific guanine nucleotide-releasing factor 1
Immunogen	The antiserum was produced against synthesized peptide derived from mouse Ras-GRF1 around the phosphorylation site of Ser916. AA range:882-931
Specificity	Phospho-Ras-GRF1 (S916) Polyclonal Antibody detects endogenous levels of Ras-GRF1 protein only when phosphorylated at S916.
Formulation	Liquid in PBS containing 50% glycerol, 0.5% BSA and 0.02% sodium azide.
Source	Polyclonal, Rabbit,IgG
Purification	The antibody was affinity-purified from rabbit antiserum by affinity-chromatography using epitope-specific immunogen.
Dilution	Immunohistochemistry: 1/100 - 1/300. Immunofluorescence: 1/200 - 1/1000. ELISA: 1/20000. Not yet tested in other applications.
Concentration	1 mg/ml
Purity	≥90%
Storage Stability	-20°C/1 year
Synonyms	RASGRF1; CDC25; GNRP; GRF1; Ras-specific guanine nucleotide-releasing factor 1; Ras-GRF1; Guanine nucleotide-releasing protein; GNRP; Ras-specific nucleotide exchange factor CDC25
Observed Band	
Cell Pathway	
Tissue Specificity	
Function	
Background	IRASGRF1 (Ras Protein Specific Guanine Nucleotide Releasing Factor 1) is a Protein Coding gene. Diseases associated with RASGRF1 include bleeding disorder, platelet-type, 18 and refractive error. Among its related pathways are Signaling by GPCR and Immune System. GO annotations related to this gene include guanyl-nucleotide exchange factor activity and Ras guanyl-nucleotide exchange factor activity. An important paralog of this gene is RALGDS. romotes the exchange of Ras-bound GDP by GTP.
matters needing attention	Avoid repeated freezing and thawing!



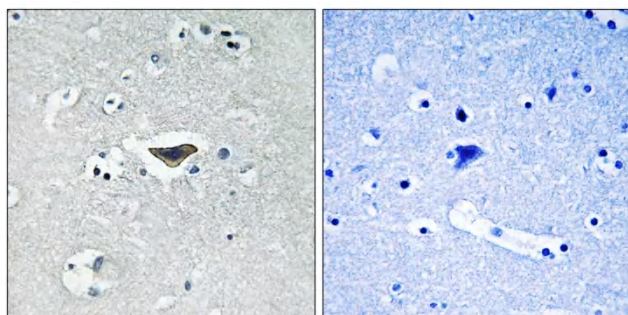
Usage suggestions

This product can be used in immunological reaction related experiments. For more information, please consult technical personnel.

Products Images



Enzyme-Linked Immunosorbent Assay (Phospho-ELISA) for Immunogen Phosphopeptide (Phospho-left) and Non-Phosphopeptide (Phospho-right), using Ras-GRF1 (Phospho-Ser916) Antibody



Immunohistochemistry analysis of paraffin-embedded human brain, using Ras-GRF1 (Phospho-Ser916) Antibody. The picture on the right is blocked with the phospho peptide.